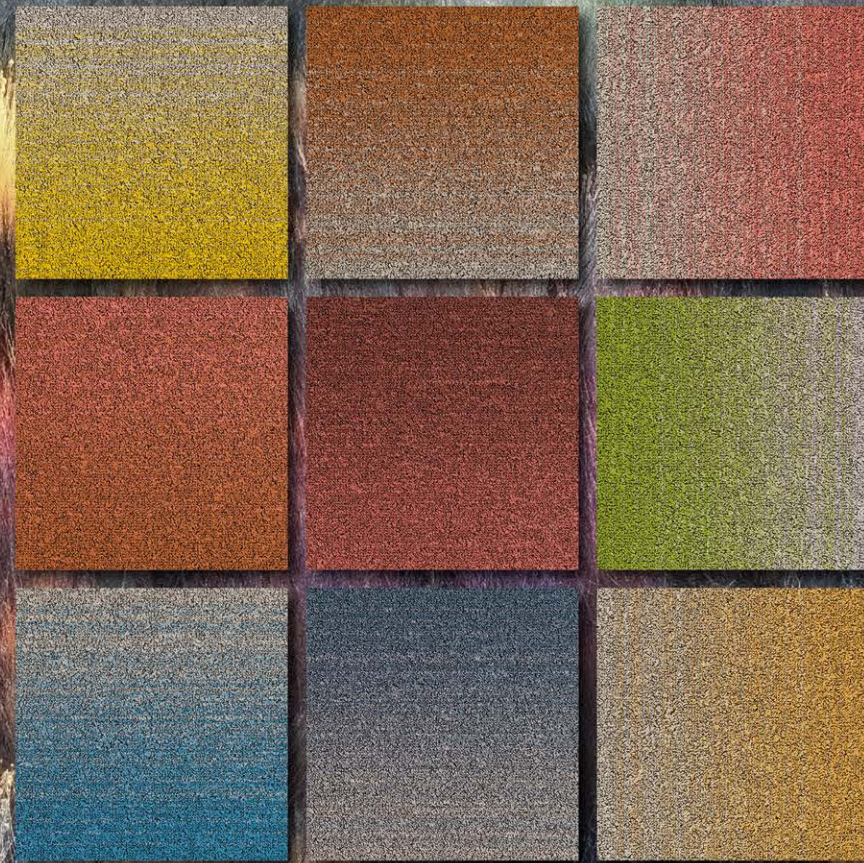


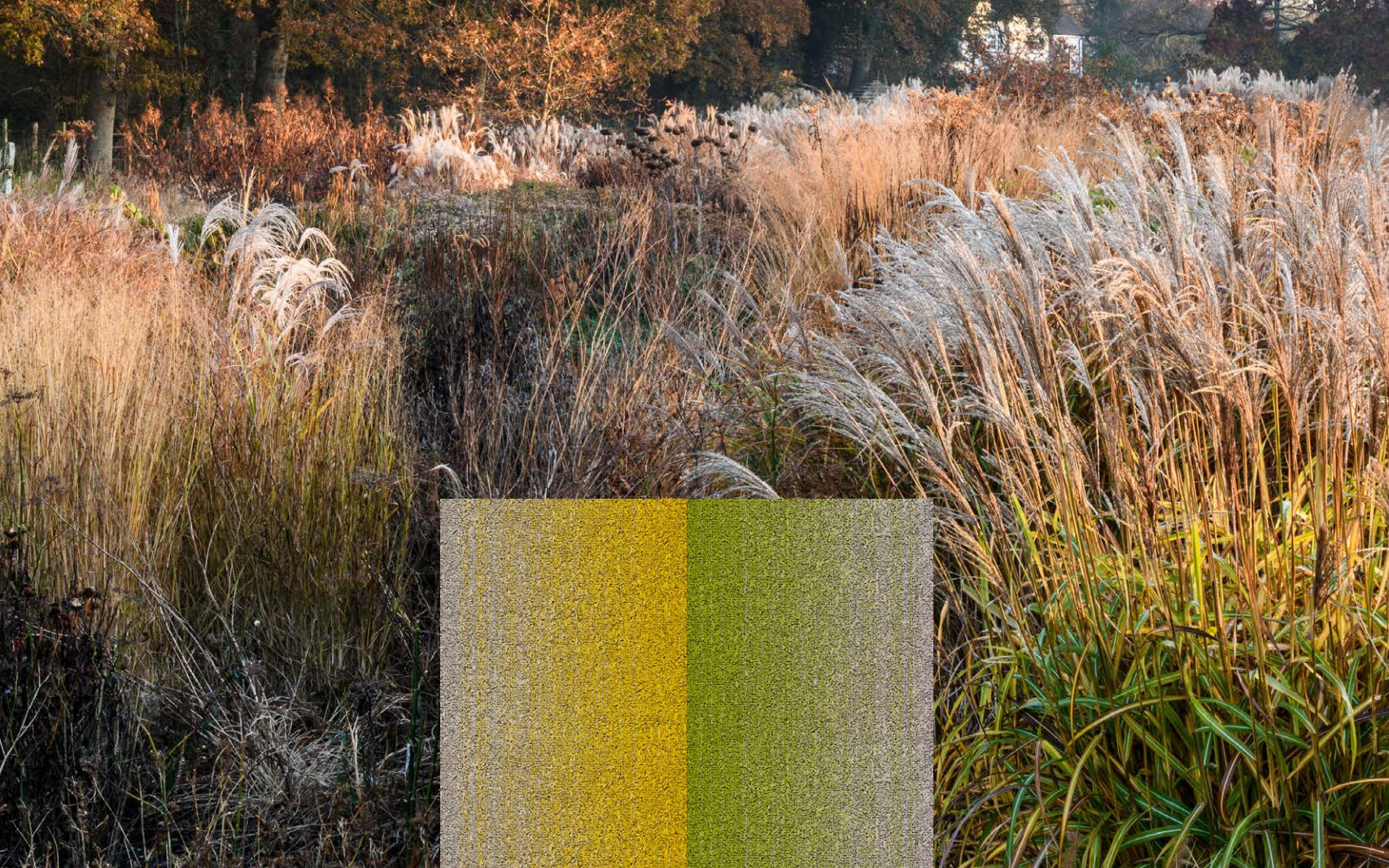
DESSO

# FUSE LANDSCAPE

CARPET TILES







# JOURNEY THROUGH COLOUR

The Fuse Landscape collection imagines interior spaces as fields of colour, with fluid transitions for creating flexible, multifunctional workspaces. Complementary shades and textures melt into one another organically for effortlessly beautiful spaces that work better – naturally.

FUSE 5433  
FUSE 7073

FUSE LANDSCAPE

JOURNEY THROUGH COLOUR





FUSE 7073  
FIELDS 7072  
FIELDS 9515

FUSE LANDSCAPE

JOURNEY THROUGH COLOUR

FUSE 7854  
FUSE 7843  
FUSE 7833  
FIELDS 7231  
FIELDS 7814  
FIELDS 7831



# A CIRCULAR JOURNEY



Learning from nature means learning from the beautifully circular systems that exist in the natural world. At Tarkett, our circular journey is about the used and reused materials that go into our products, the innovative manufacturing processes, and the knowledge that we're actively cutting down on waste and greenhouse gas emissions.



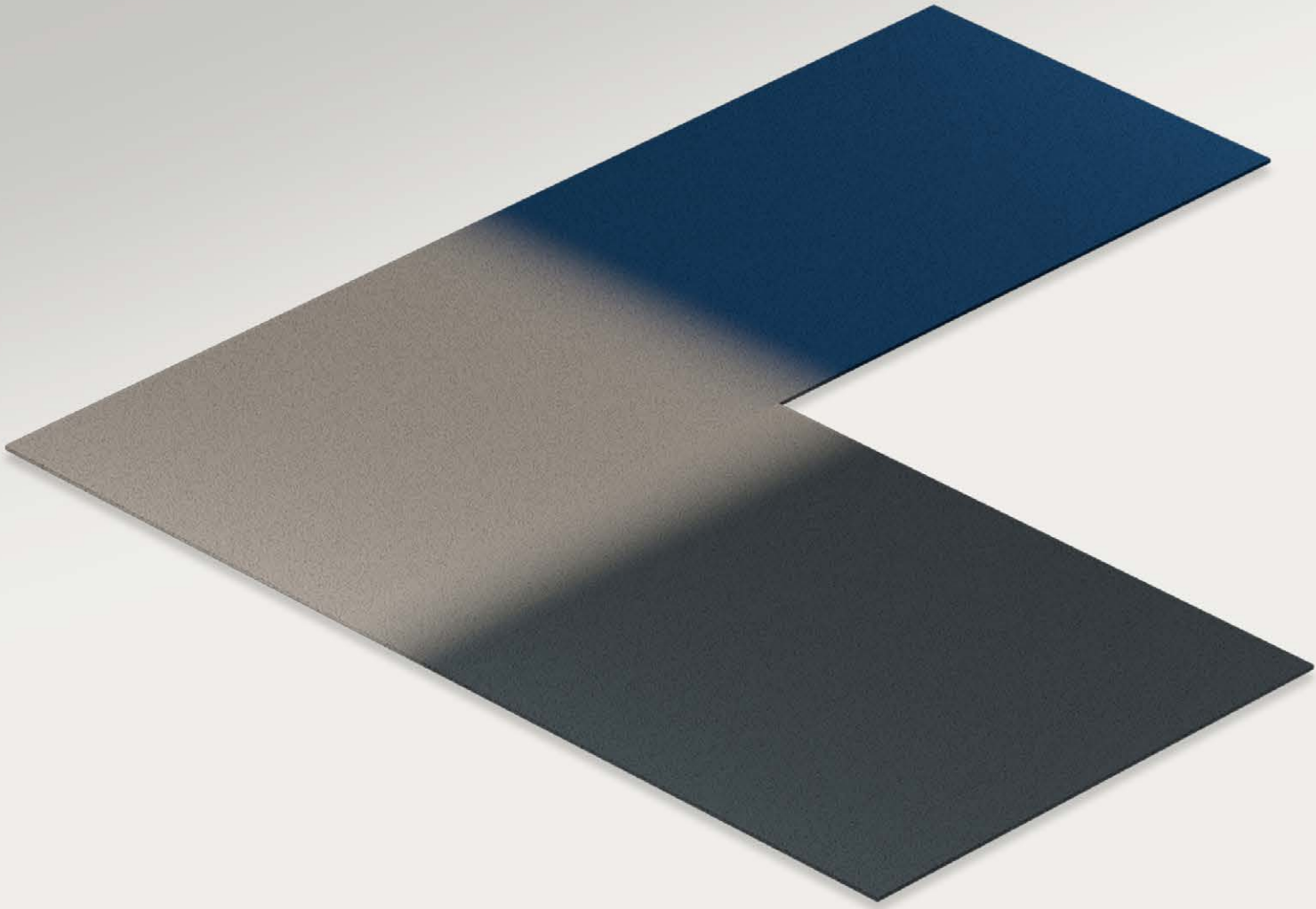


FUSE 8804  
 FUSE 8823  
 FIELDS 8822  
 FIELDS 8332  
 FIELDS 9515

FUSE LANDSCAPE

FUSE 7073  
 FUSE 7833  
 FIELDS 7072  
 FIELDS 7814  
 FIELDS 9515

FUSE 8804  
 FUSE 8823  
 FIELDS 8822  
 FIELDS 8332  
 FIELDS 9515



JOURNEY THROUGH COLOUR





FUSE 7915  
FUSE 7843  
FUSE 7854  
FIELDS 9515  
FIELDS 7814  
FIELDS 7231

## DESIGNING THE OFFICE LANDSCAPE

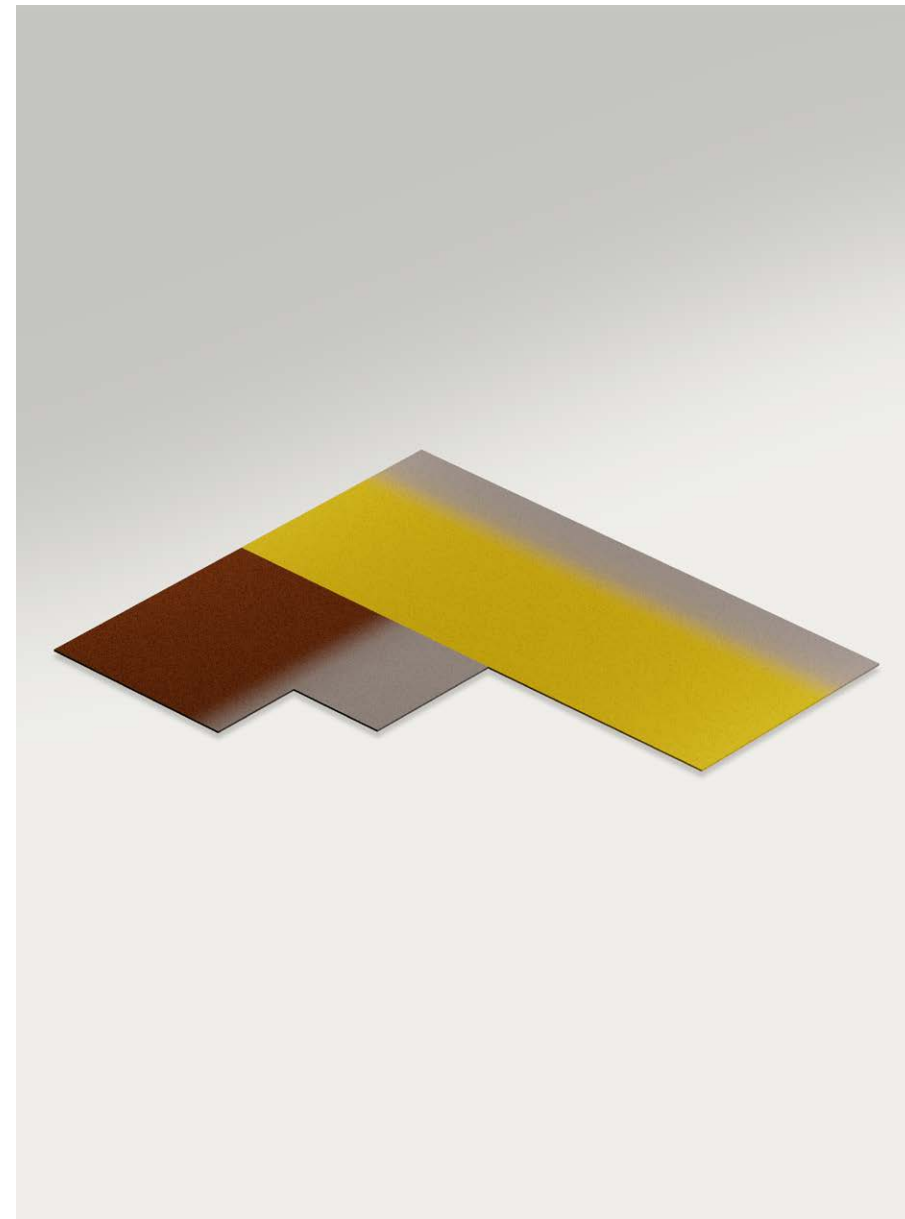
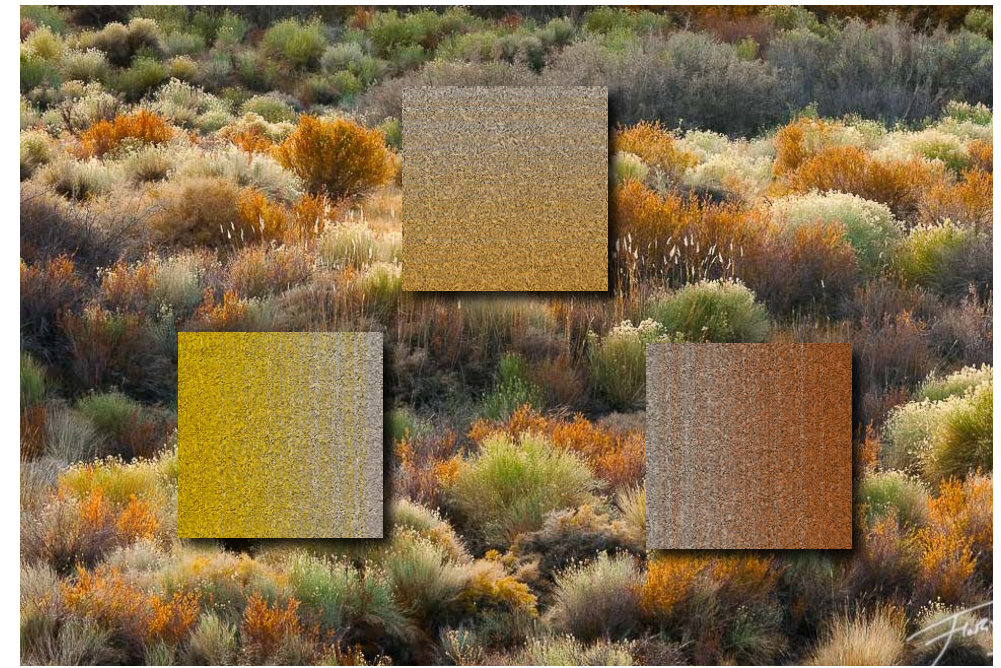
Flexible, adaptive workplaces are the new normal, with the best spaces responding to multiple needs, personalities and ways of working. Fuse Landscape carpet tiles easily define hybrid spaces and marked zones for gathering or focused work, seamlessly denoting transitional areas with thoughtful, transitional colours.





FUSE LANDSCAPE

FUSE 2014  
FUSE 5433  
FUSE 2045



JOURNEY THROUGH COLOUR

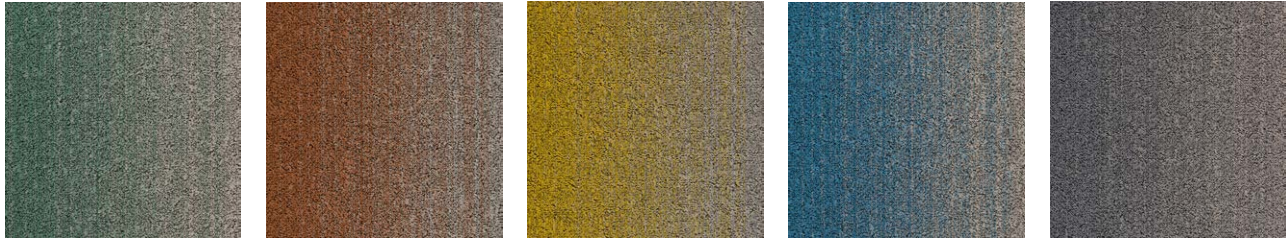
FUSE 1915  
FUSE 2014  
FIELDS 6218  
FIELDS 9515  
FIELDS 4438



# FUSE LANDSCAPE



B755 7073 710512012    B755 1915 710512039    B755 9096 710512014    B755 8823 710512015    B755 9920 710512053



B755 7915 710512047    B755 2045 710512052    B755 2014 710512001    B755 8835 710512044    B755 8905 710512013



B755 7854 710512048    B755 2104 710512040    B755 5433 710512051    B755 8814 710512043    B755 9965 710512003



B755 7833 710512050    B755 2956 710512041    B755 8804 710512046    B755 9970 710512054



B755 7843 710512049    B755 5131 710512042    B755 8423 710512045

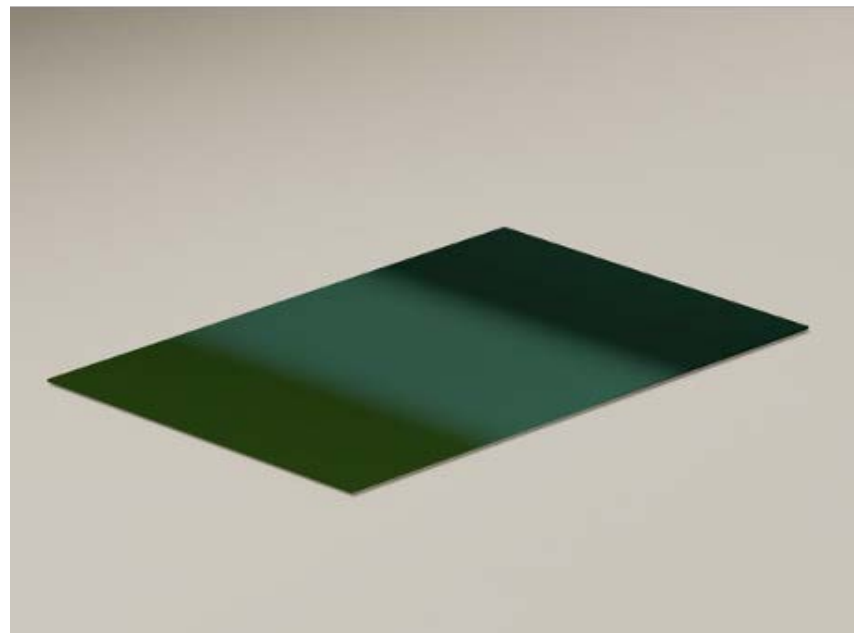
[CLICK HERE TO DOWNLOAD IN 3D WAREHOUSE](#)

PLEASE SEE SAMPLE CARD FOR MATCHING DESSO FIELDS COLOURS

FUSE 2956  
 FIELDS 4438  
 FIELDS 2093



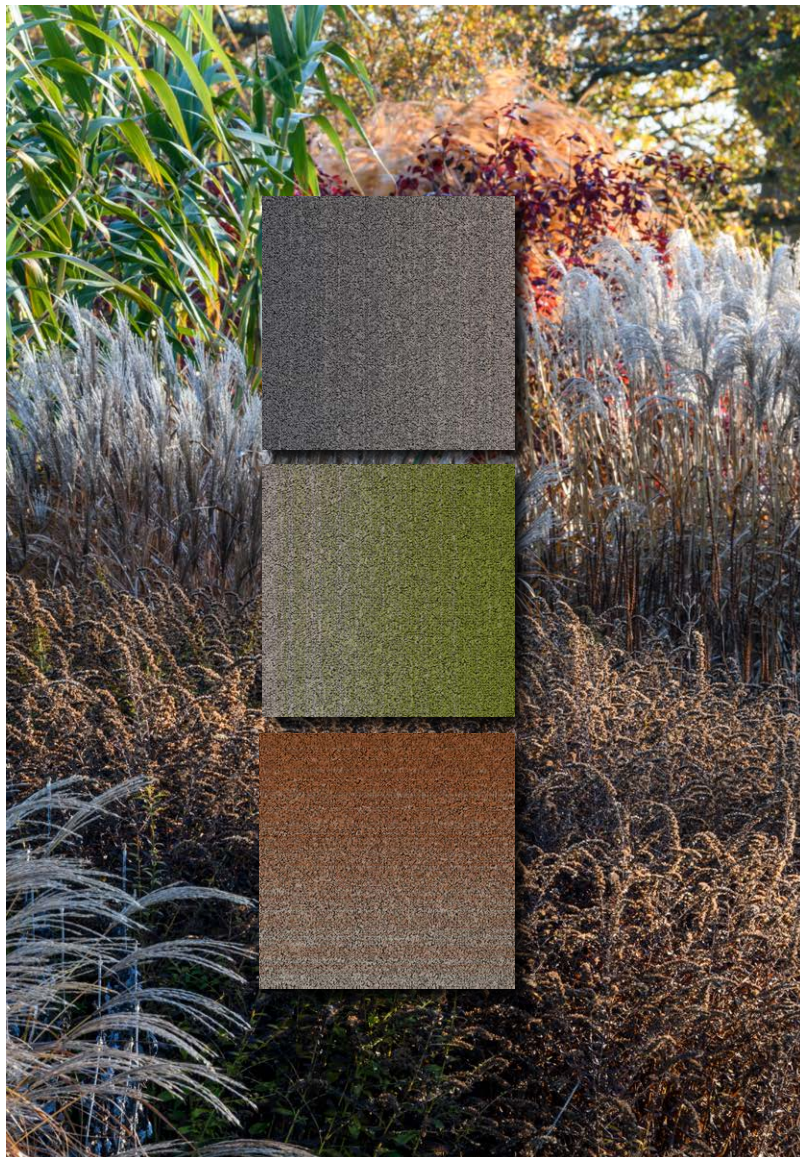




FUSE 2956  
FUSE 1915  
FUSE 2104  
FIELDS 4438  
FIELDS 2093  
FIELDS 9515



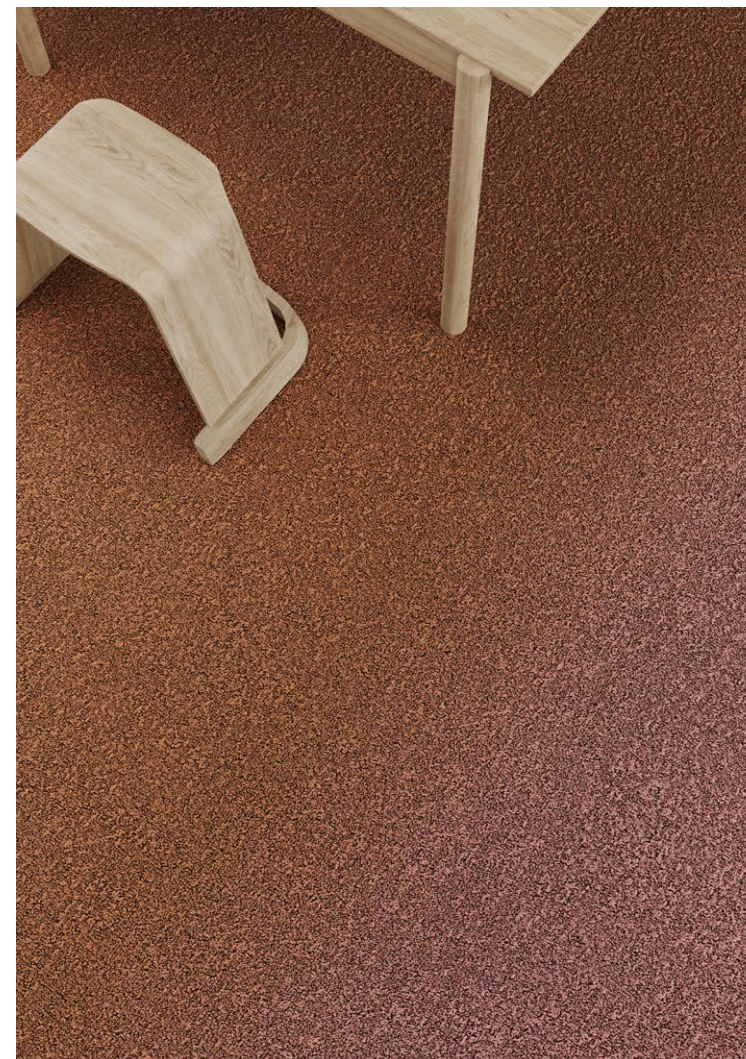
FUSE 5131  
FIELDS 4438  
FIELDS 2056



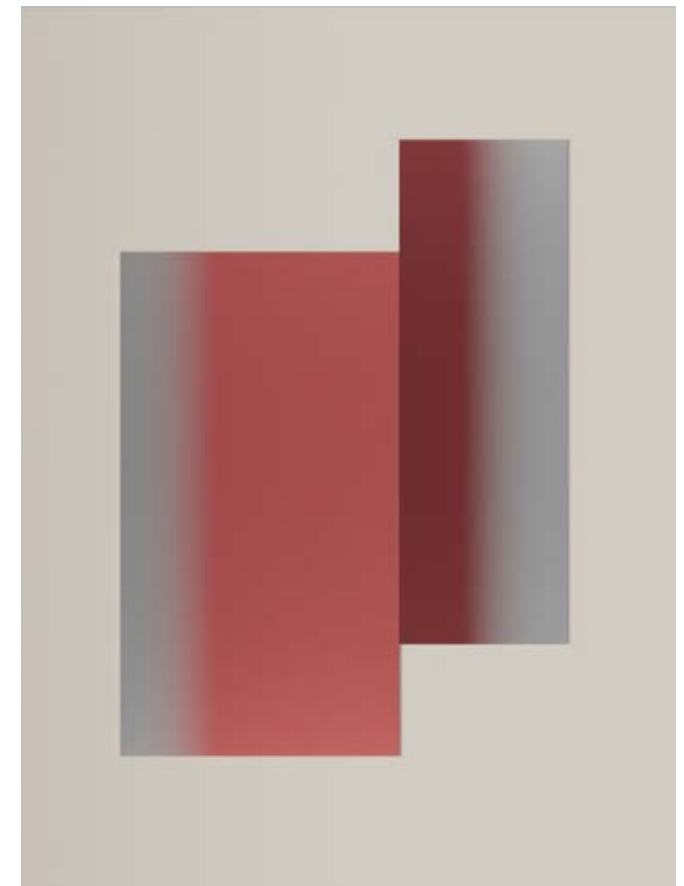
FUSE LANDSCAPE



FUSE 7073  
FIELDS 7072  
FIELDS 9515



JOURNEY THROUGH COLOUR





# NATURAL TRANSITIONS



Nature-inspired shades and fluid, colour-to-colour transitions mean you can build flexibility into every floor plan, creating softly textured spaces that evoke different landscapes, moods and seasons. Inviting and tactile, these are workplaces that respond to nature – human nature.

FUSE LANDSCAPE

JOURNEY THROUGH COLOUR

FUSE 8823  
FUSE 8804  
FIELDS 8822  
FIELDS 8332  
FIELDS 9515





FUSE LANDSCAPE

JOURNEY THROUGH COLOUR

FUSE 8804

FUSE 8823

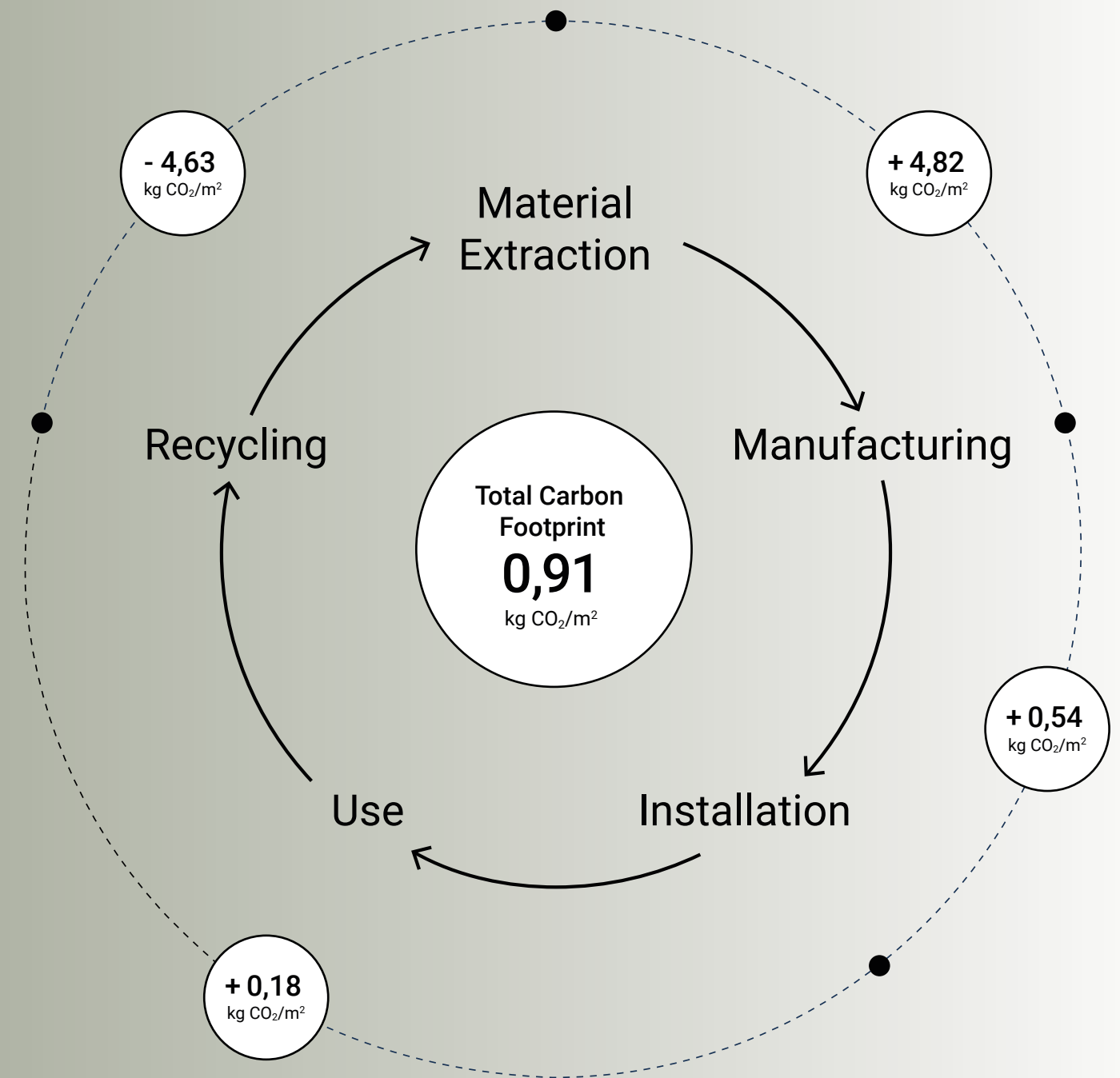
FIELDS 8332

FIELDS 8822

FIELDS 9515



# CIRCULAR CARBON FOOTPRINT



At Tarkett, we're committed to taking real steps to reduce the emission of greenhouse gases like carbon dioxide, a major contributor to global warming. Our circular approach to carpet tiles enables us to do just that.

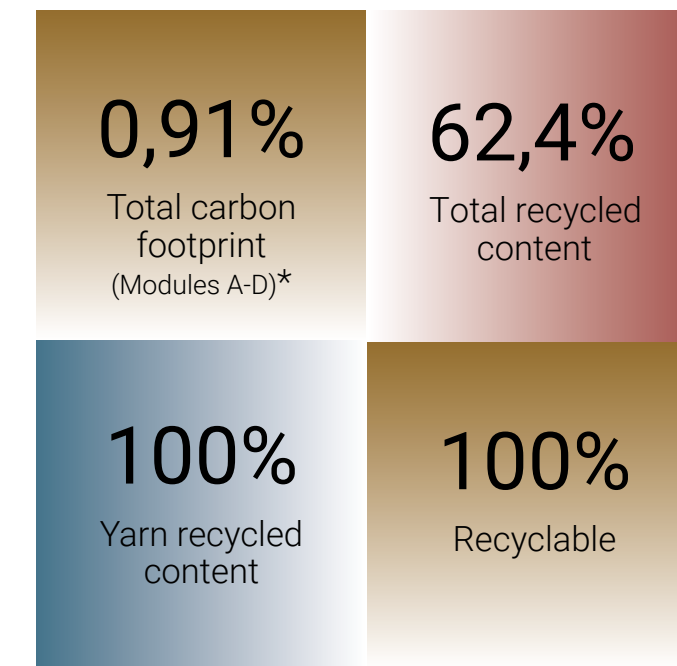
The only carpet tile manufacturer with a closed-loop recycling system, we limit the use of virgin raw materials for new products, and avoid common, carbon-emitting options such as incineration and the landfill at product end-of-life. This closed-loop system ensures that our carpet tiles record an impressively low circular carbon footprint – one we're continually working to shrink even further.



FUSE 1915  
FUSE 2956  
FIELDS 4438  
FIELDS 2093  
FIELDS 9515



# SUSTAINABILITY CREDENTIALS



\* According to the Environmental Product Declaration (EPD) S-P-08559 - Fuse and Fields externally verified by Bureau Veritas, based on the total carbon footprint (Modules A-D) with a closed loop circular recycling scenario.





FUSE 1915  
FUSE 2104  
FUSE 2045  
FUSE 5131  
FUSE 2956  
FUSE 2014

FUSE LANDSCAPE

JOURNEY THROUGH COLOUR

FIELDS 9515  
FIELDS 4438  
FIELDS 2093  
FIELDS 2056  
FIELDS 6218



# TECHNICAL SPECIFICATIONS

Preliminary specification according to EN 1307

		FUUSE		FIELDS	
Type of manufacture	ISO 2424	Tufted 1/10" Structured loop pile		Tufted 1/10" Structured loop pile	
Pile Fibre	ISO 2424	Solution dyed BCF PA 6 ECONYL®*		Solution dyed BCF Polyamide 6 ECONYL®*	
Dimensions	EN ISO 24342	50 x 50 cm / 19,68" x 19,68" (20 tiles per box)		50 x 50 cm / 19,68" x 19,68" (20 tiles per box)	
Primary backing	ISO 2424	Polyester fleece		Polyester fleece	
Secondary backing	ISO 2424	DESSO EcoBase®**		DESSO EcoBase®**	
Total thickness	ISO 1765	6.5 mm	0.3 inch	6.5 mm	0.3 inch
Effective pile thickness	ISO 1766	2.8 mm	0.11 inch	2.8 mm	0.11 inch
Total mass	ISO 8543	4250 g/m <sup>2</sup>	125.4 oz/yd <sup>2</sup>	4250 g/m <sup>2</sup>	125.4 oz/yd <sup>2</sup>
Total pile mass	ISO 2424	730 g/m <sup>2</sup>	21.5 oz/yd <sup>2</sup>	730 g/m <sup>2</sup>	21.5 oz/yd <sup>2</sup>
Effective pile mass	ISO 8543	415 g/m <sup>2</sup>	12.2 oz/yd <sup>2</sup>	415 g/m <sup>2</sup>	12.2 oz/yd <sup>2</sup>
Pile density	ISO 8543	0.148 g/cm <sup>3</sup>	0.0054 lb/in <sup>3</sup>	0.148 g/cm <sup>3</sup>	0.0054 lb/in <sup>3</sup>
Number of tuft	ISO 1763	1580 /dm <sup>2</sup>	132104 /yd <sup>2</sup>	1580 /dm <sup>2</sup>	132104 /yd <sup>2</sup>
Stroll test	ISO 6356	≤ 2.0 kV		≤ 2.0 kV	
Classification for use	EN 1307	33 Commercial - heavy use		33 Commercial - heavy use	
Vertical resistance	ISO 10965	≤ 1 x 10 <sup>9</sup> Ohm		≤ 1 x 10 <sup>9</sup> Ohm	
Dimensional stability	EN 986	≤ 0.2 %		≤ 0.2 %	
Impact sound reduction ΔL <sub>w</sub>	ISO 10140	23 dB		23 dB	
Noise reduction	ISO 354	0.15 α <sub>w</sub>		0.15 α <sub>w</sub>	
Flammability	EN 13501-1	B <sub>fl</sub> - s1 (loose laid tested)		B <sub>fl</sub> - s1 (loose laid tested)	

**Preliminary specification**  
Tarkett carpet products are to be installed in full accordance with the DESSO installation instructions and recognised trade standards. An effective, regular cleaning and maintenance programme is vital for retaining a high appearance level. Tarkett carpet products should only be used as floorcoverings. Note: Tarkett reserves the right to amend this specification without giving prior notice. For the latest versions of the technical specifications, check our internet site: [www.desso.com](http://www.desso.com)



**CE**  
EN 14041  
0493-CPR-0002

Manufactured by:  
Fabriqué par:  
Geproduceerd door:  
Hergestellt von:

Tarkett BV  
PO BOX 169  
NL - 5140AD Waalwijk

\* ECONYL® is a yarn made from 100% regenerated content. The total % of regenerated content varies per product and per colour. Whether a colour contains ECONYL® and the exact % thereof can be found on our website: [www.tarkett.com](http://www.tarkett.com)

\*\* Containing on average 80% C2C positively defined recycled content. DESSO EcoBase® is a polyolefin based backing. Positively defined means: all ingredients have been assessed as either Green (optimal) or Yellow (tolerable) according to the Cradle to Cradle® assessment criteria. As described in Cradle to Cradle® Certified™ Product Standard Version 3.1. The total % of recycled content varies per product and per colour which can be found on our website: [www.tarkett.com](http://www.tarkett.com)



FUSE 7073

FIELDS 7072

FIELDS 9515

**Photography:** Alexander van Berge

**Stylist:** Bregje Nix

**3D Renderings:** Studio 3D Sweden

**Thanks to:** Casala, Ethnicraft, Live-Light, vtwomen, Vitra, Noom, Arco

Installation method used in all photography: single line installation 2 cm bricks

#### **Tarkett Human-Conscious Design®**

Tarkett Human-Conscious Design® is our pledge to stand with present and future generations. To create flooring and sports surfaces that are good for people and for the planet. And to do it every day. We deliver on this through the synergy of three commitments:

- 1 Deep human understanding
- 2 Conscious choices. For people and planet
- 3 With you. Every step of the way

#### **About Tarkett**

With a history of 140 years, Tarkett is a worldwide leader in innovative flooring and sport surface solutions, with net sales of €2.8 billion in 2021. Offering a wide range of products including vinyl, linoleum, rubber, carpet, wood, laminate, artificial turf and athletic tracks, the Group serves customers in more than 100 countries across the globe. Tarkett has 12,000 employees and 34 industrial sites, and sells 1.3 million square meters of flooring every day, for hospitals, schools, housing, hotels, offices, stores, and sports fields. Committed to change the game with circular economy and to reducing its carbon footprint, the Group has implemented an eco-innovation strategy based on Cradle to Cradle principles, fully aligned with its Tarkett Human-Conscious Design approach. Tarkett is listed on Euronext (Compartment B, ISIN FR0004188670, ticker: TKTT).

[www.tarkett-group.com](http://www.tarkett-group.com)

© Tarkett, April 2023

Descriptions, colours and specifications are subject to change without notice. Tarkett is not responsible for typographical/photographical errors. Actual product may differ from illustration. All rights reserved. Reproduction in whole or in part is prohibited without the prior written consent of the copyright owner. The information presented in this document does not form part of any quotation or contract, is believed to be accurate and reliable and may be changed without notice. No liability will be accepted by the publisher for any consequence of its use. Publication thereof does not convey nor imply any license under patent- or other industrial or intellectual property rights. In case of doubt or differences of interpretation, the English version shall prevail over all other language versions.

